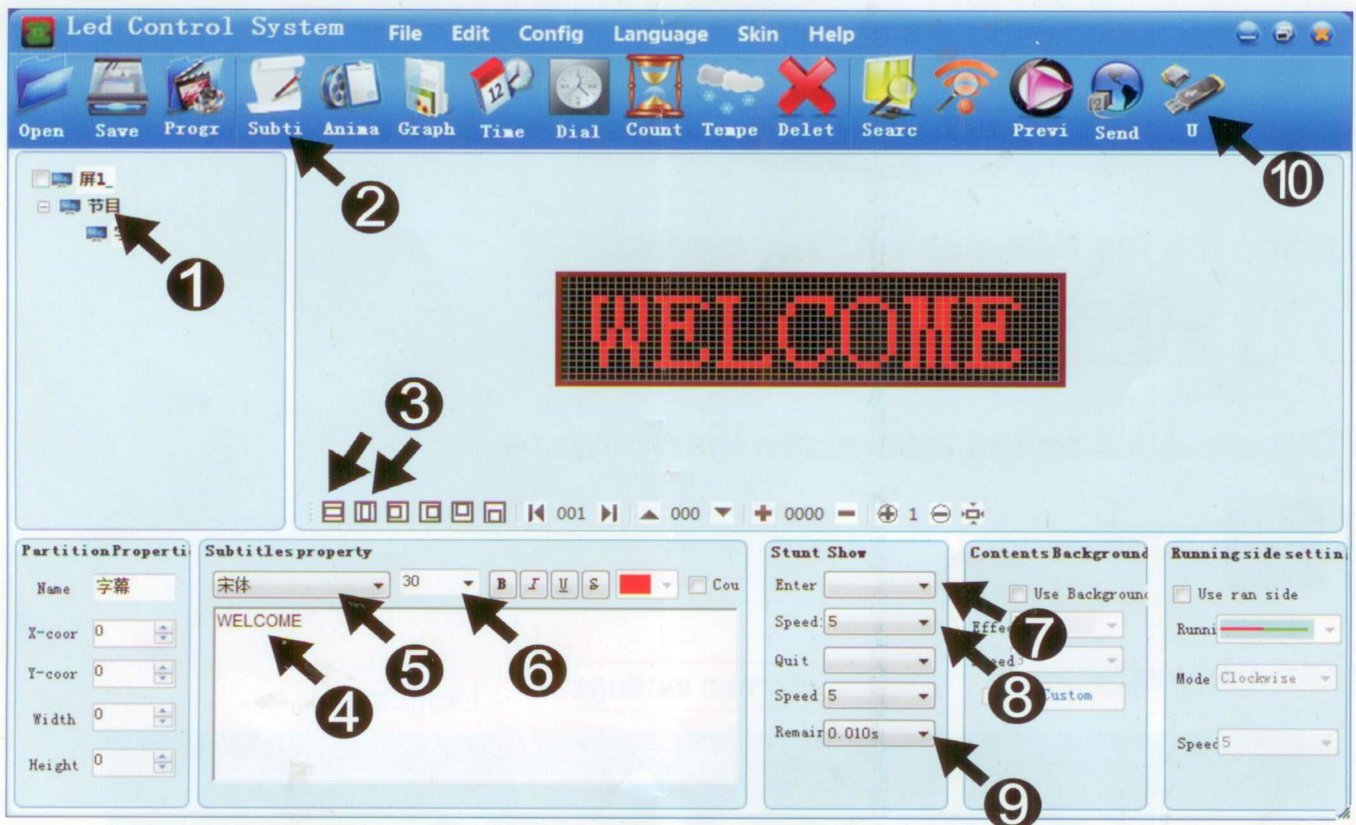


Simple operation instruction



1:Append program.

2:Subtitle.

3:Remaining screen.

4:Wirte the text.

5:Change the font.

6:Change the text size.

7:Display method.

8:Run speed.

9:Hold time.

10:Save to U disk.



U disk plug to the computer Before you save to the U disk,Be sure to save to U disk.

The save completed, put U disk is inserted into the screen (the case of electricity), and display the receiving, unplug the U disk. The next time you need to change the text, not the setup and set the screen size .



Thank you for using LED display

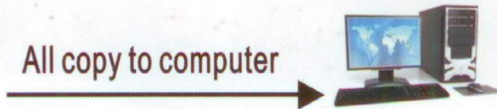


Software operation instruction

1.All copy to computer,Or supplier to send the software to you.



All copy to computer



DO NOT RUN SOFTWARE ON CD !!!

2.Open the file from copied to computer.



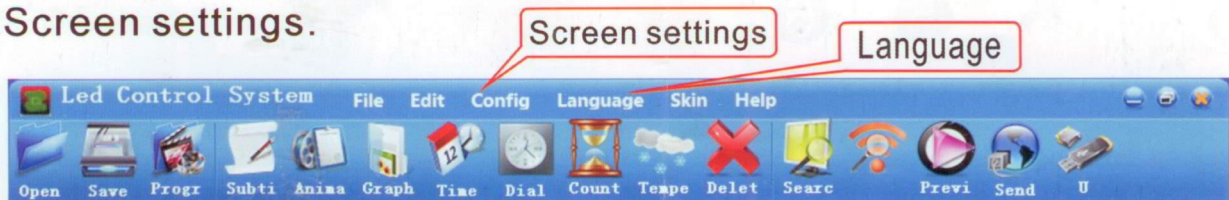
Led Control System
V3.56

3.Double-click on the icon to run the software.

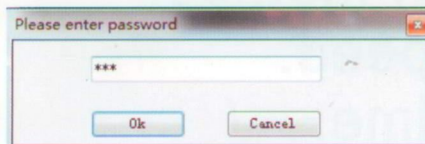


StartLedV3
Led Control System

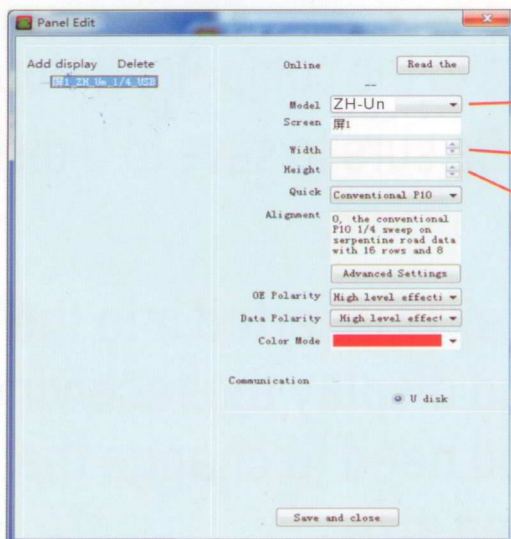
4.Screen settings.



5.Password: 168



6.Panel Edit



Model: ZH-un (The general is **ZH-un**)

Width: 192 (The number of lights)

Height: 16 (The number of lights)

These 3 options refer to the product label, Othe options are default, then save and close.